

APPENDIX I : HISTORIC MAPS

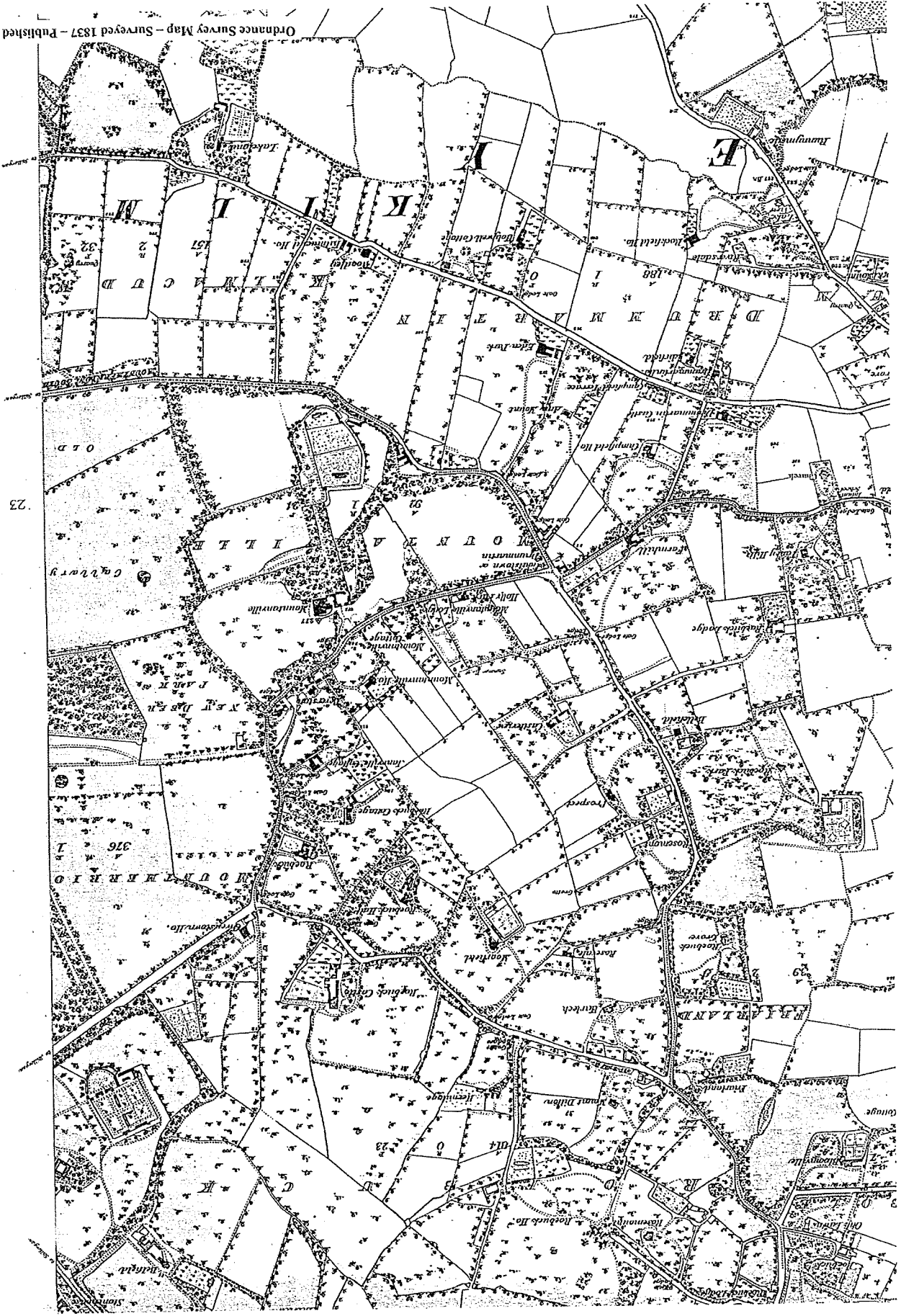


Fig. 1 - 1837 Extract OS Map - Surveyed 1837 Published 1843

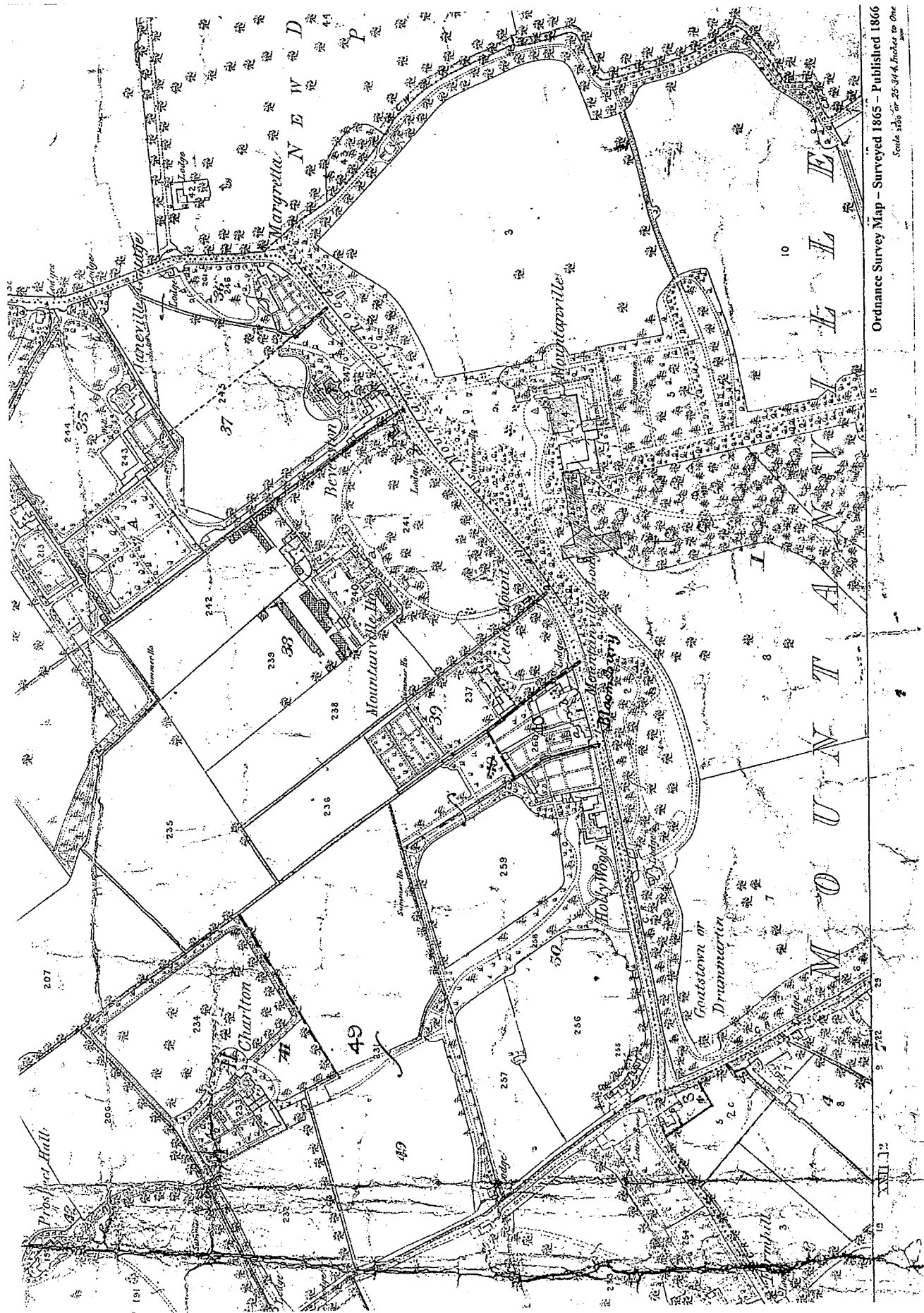
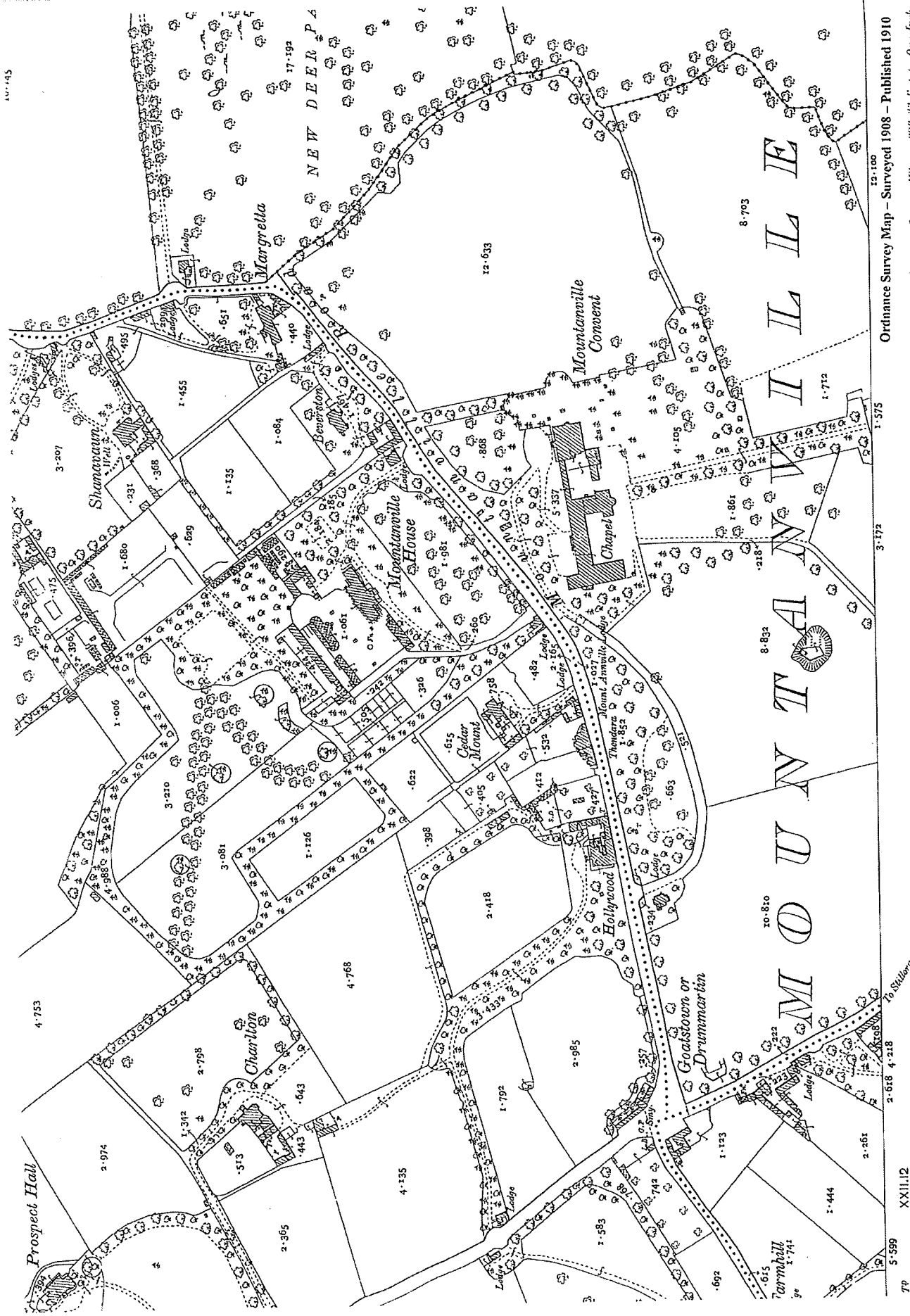


Fig. 2 - 1865 Extract OS Map- Issued Scale 1:2,500 Surveyed 1865 Published 1866

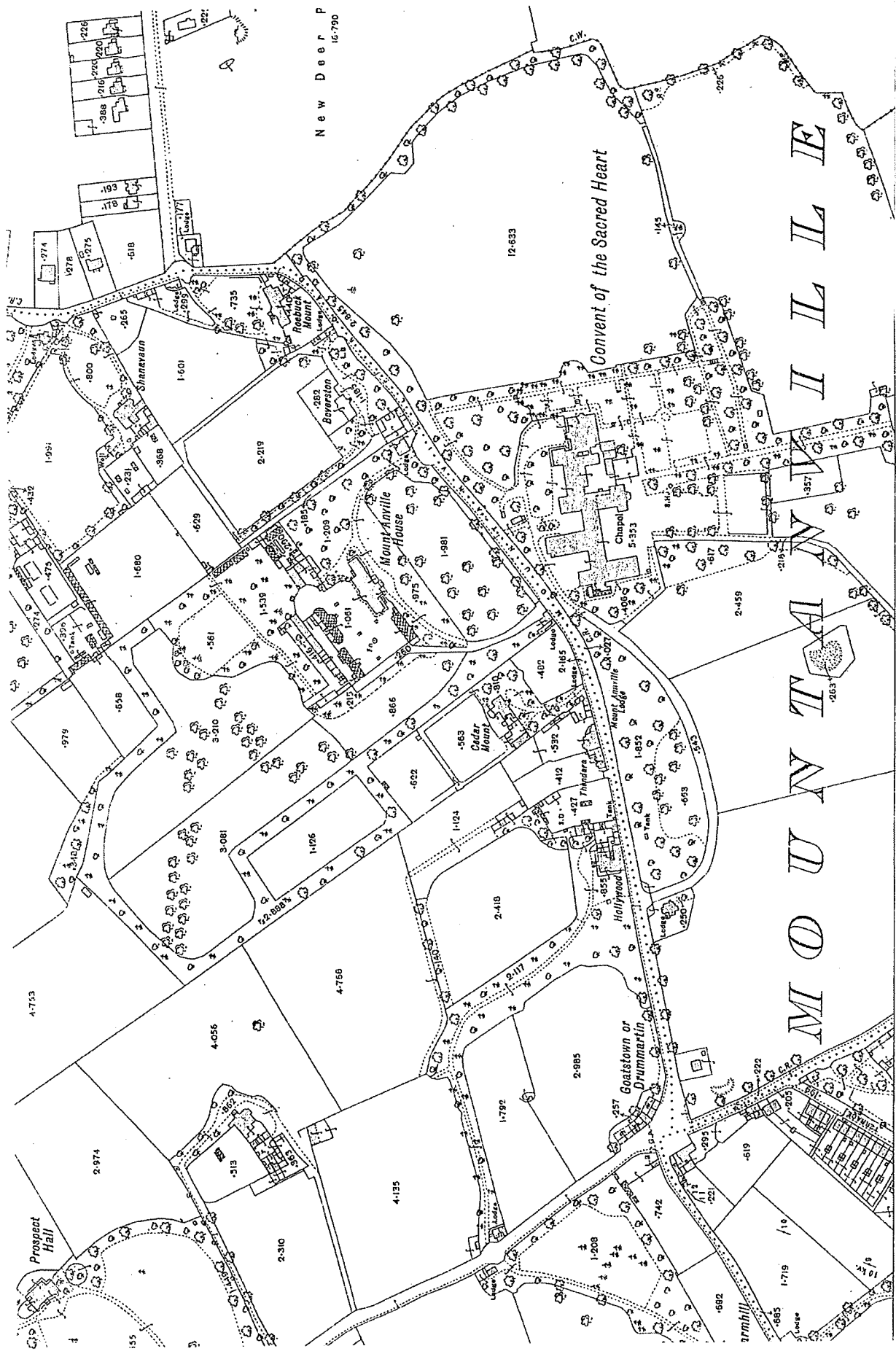


Ordnance Survey Map - Surveyed 1908 - Published 1910

Scale: 1 inch = 25,344 inches to a Statute Mile or 208.33 feet to One Inch.

Fig. 3 - 1908 Extract OS Map - Surveyed 1908 Published 1910

XXII.12
To Skillogree



Ordnance Survey Map - Surveyed 1937 - Published 1938

Scale - 1:2,500 being 2.5 inches to a Statute Mile or 208.33 Feet to One Inch.

Links 100 0 5

22. XII.

Fig. 4 - 1937 Extract OS Map - Surveyed 1937 Published 1938

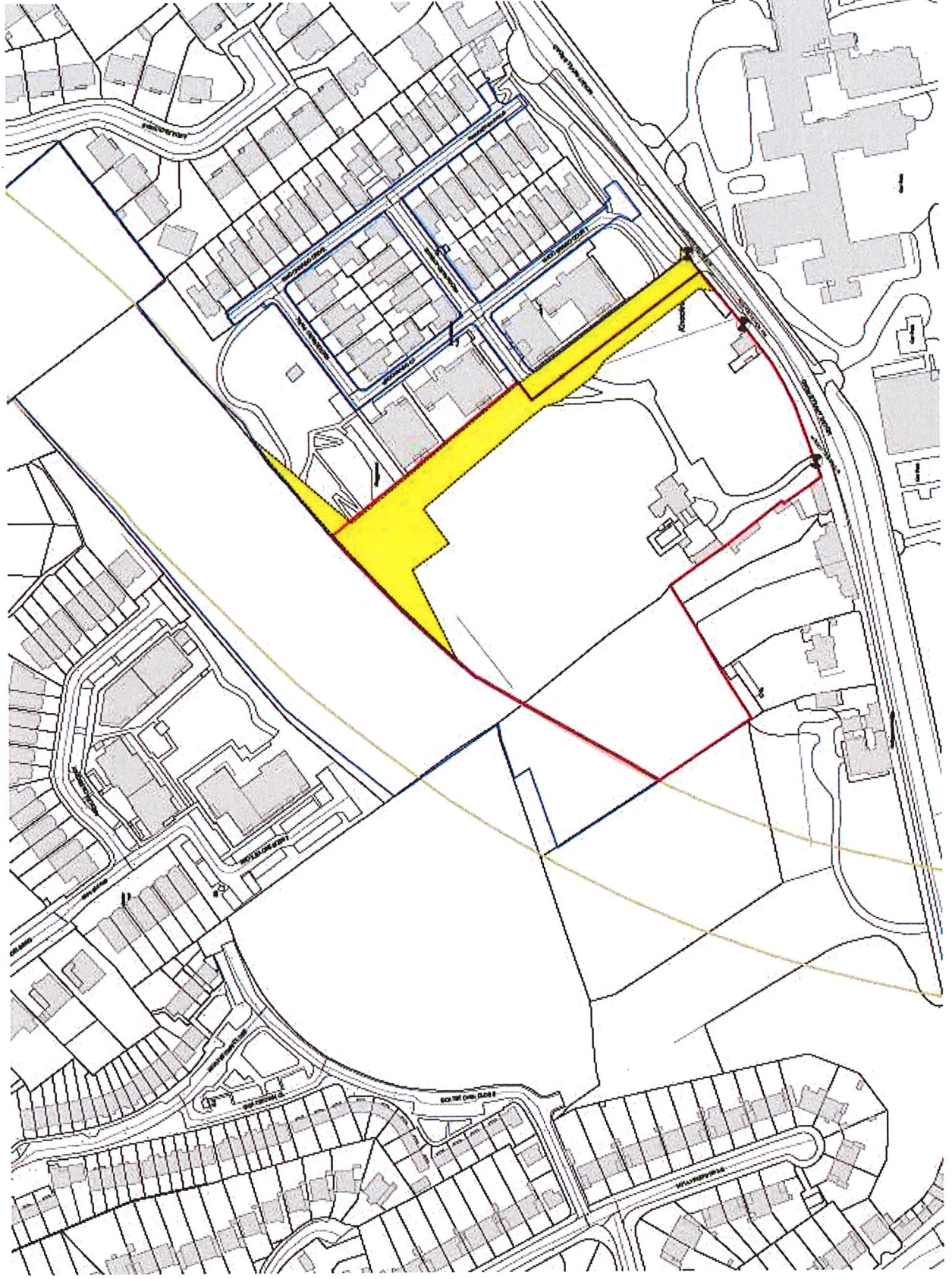


Fig. 5 - Extract from current OS Map – Source: O'Mahony Pike Architects

APPENDIX II: KEY PLANS

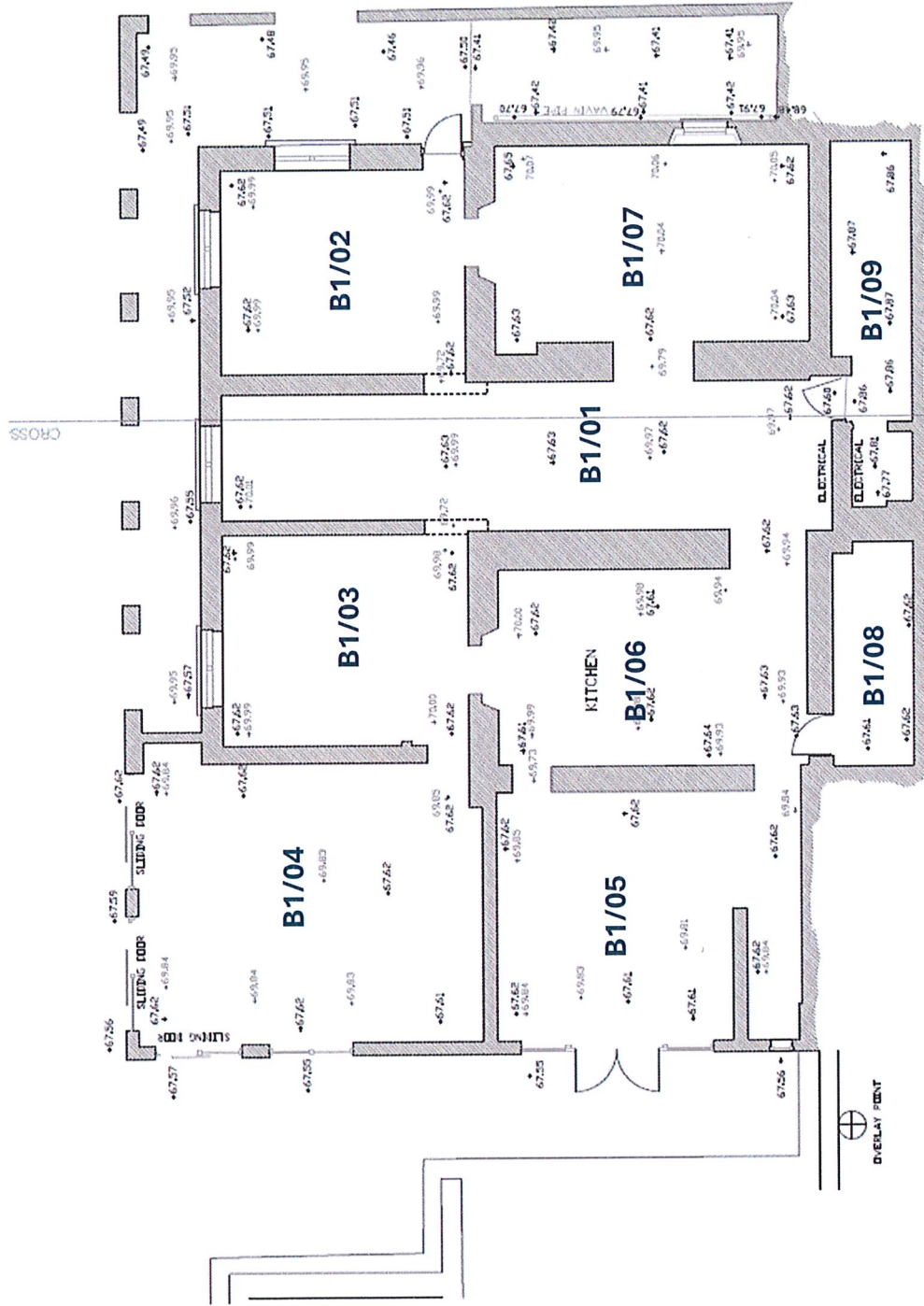


Fig. 1 – Cedar Mount House – Existing Lower Ground Floor plan.

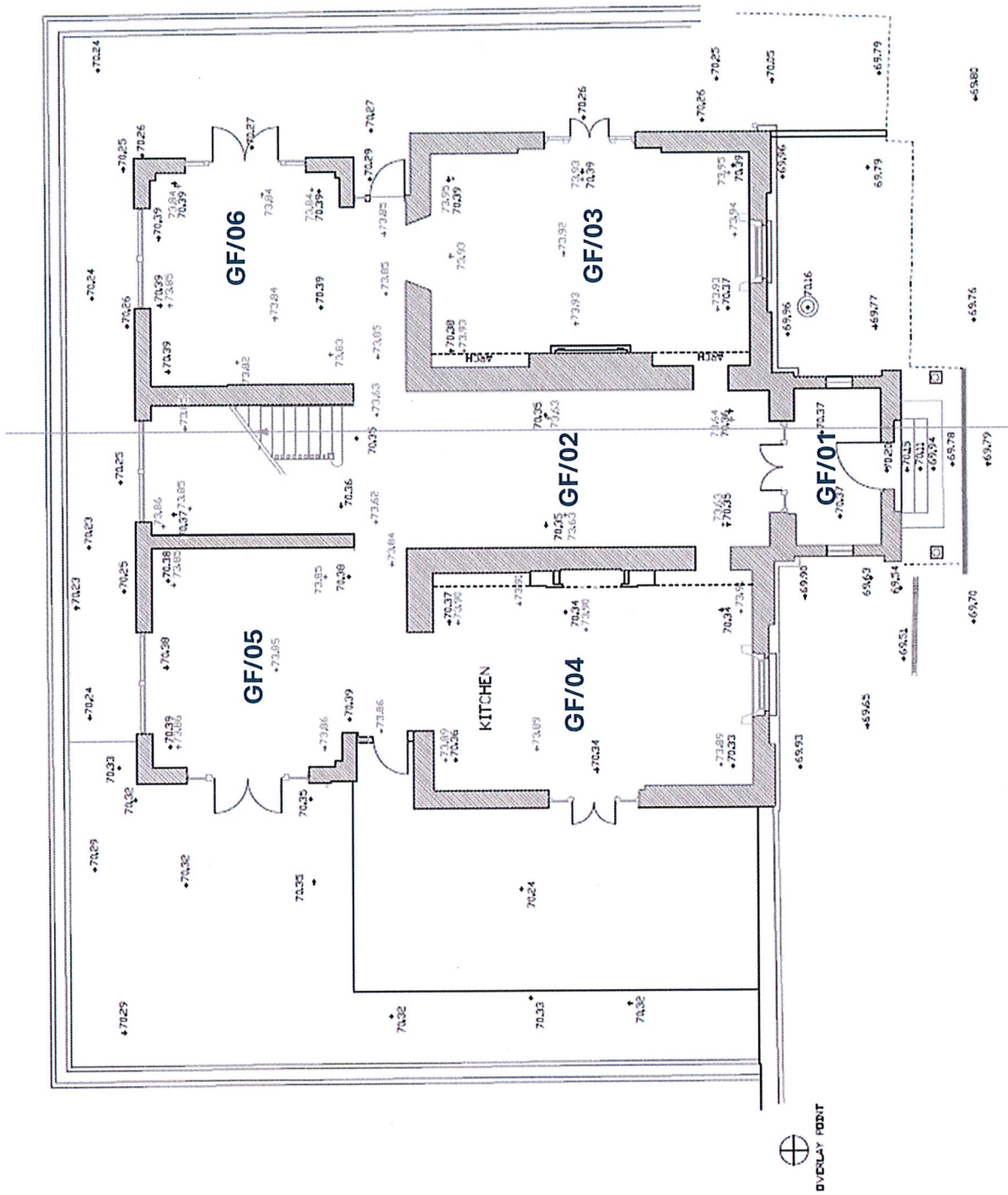


Fig. 2 – Cedar Mount House –Ground Floor plan.



Fig. 3 – Cedar Mount House – First Floor plan.

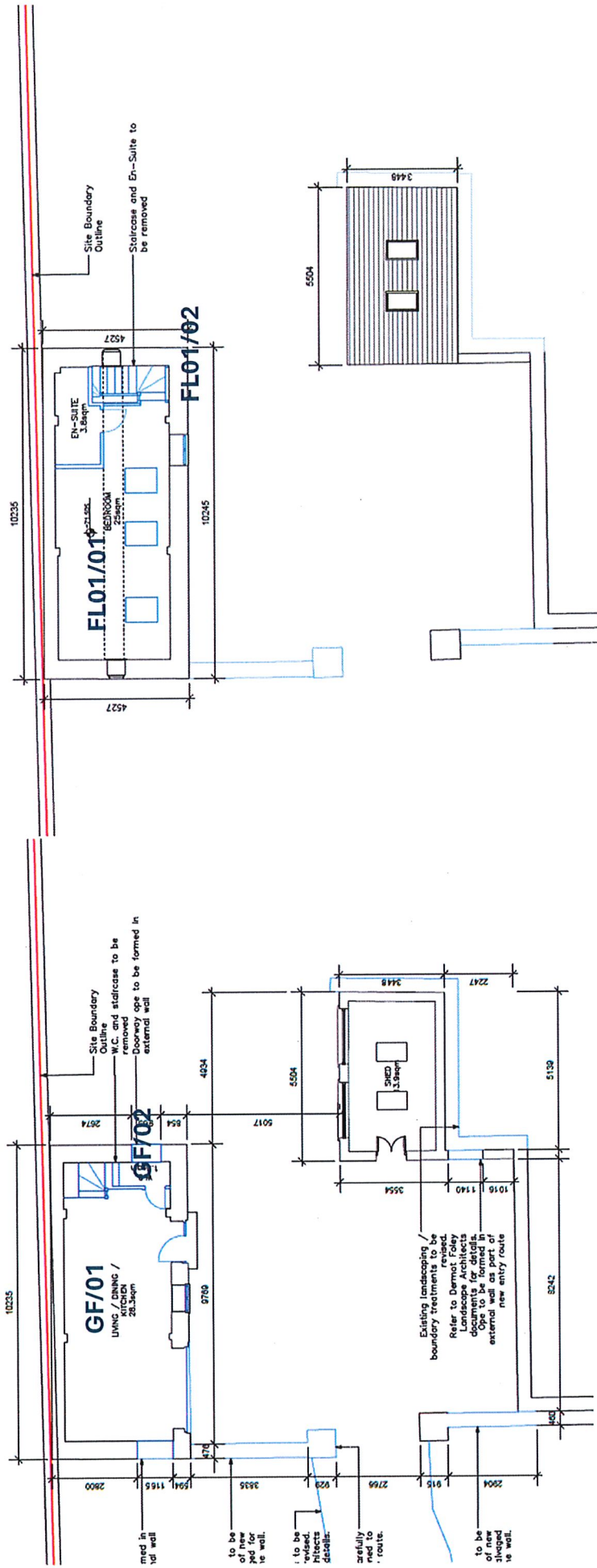


Fig. 4 – Coach House & Shed – Ground Floor plan.

Fig. 5 – Coach House & Shed – First Floor plan.

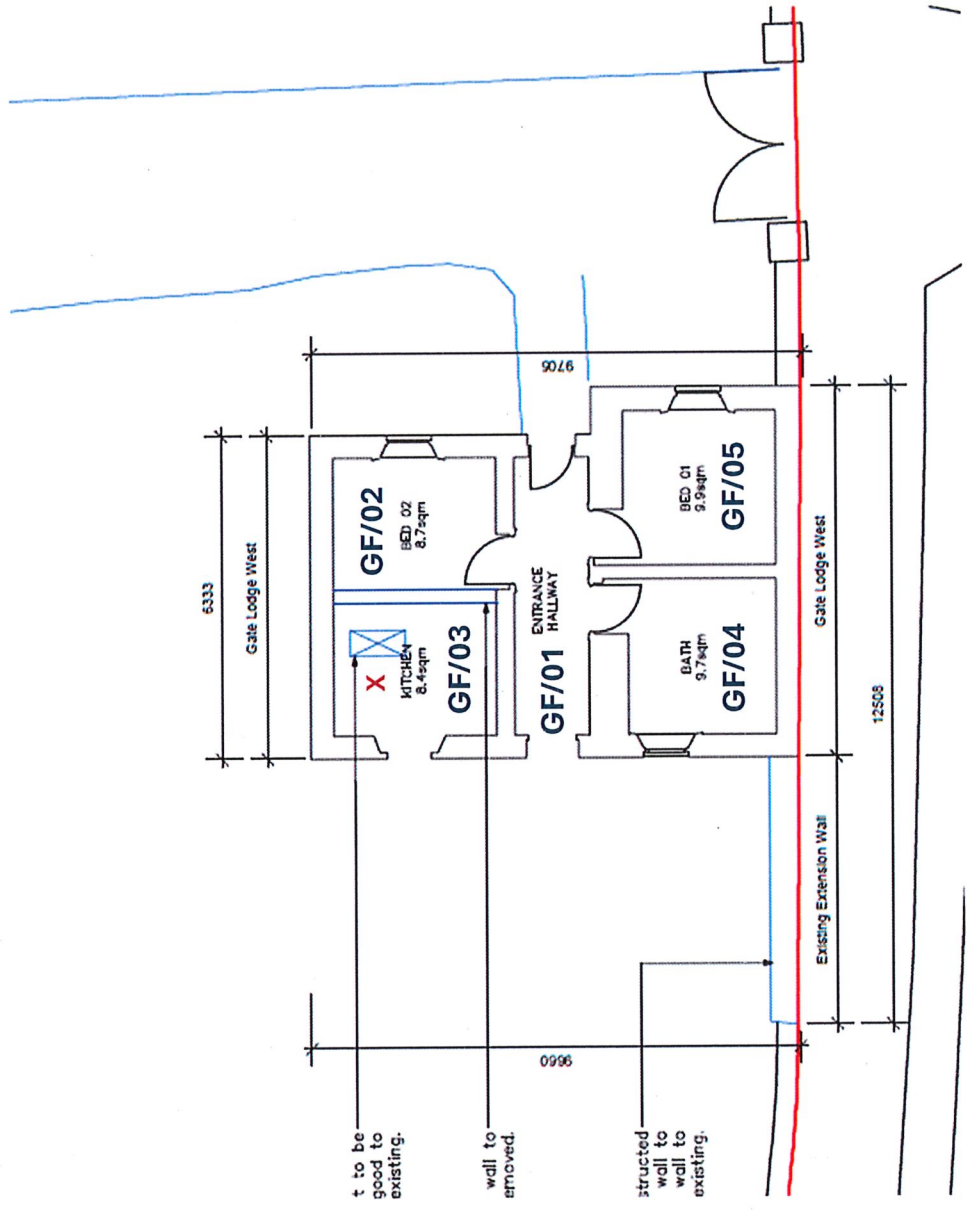


Fig. 6 – Knockrabo Gate Lodge (West) – Ground Floor Plan

X No Access

APPENDIX III: PHOTOGRAPHIC RECORD OF THE KNOCKRABO SITE AND
SETTING, MOUNT ANVILLE ROAD, DUBLIN
MAY 2024



Fig. 1 – View towards 'Thendara' to the east and 'the Garth' to the west from Mount Anville Road.



Fig. 2 – View towards Hollywood House from Mount Anville Road.



Fig. 3 — View from Cedarmount House Entrance.



Fig. 4 – View northeast - from Cedar Mount House South elevation.



Fig. 5 – View south - Cedaramount House front setting



Fig. 6 – View west - Cedar Mount House east elevation



Fig. 7 – Cedarmount House east setting, view east from Cedarmount House.



Fig. 8 – View southeast - Cedarmount House west elevation, Coach House and Outbuilding



Fig. 9 – View east - Cedarmount House west elevation



Fig. 10 – View south – Cedarmount House north elevation and Coach House to the west



Fig. 11 – View south - Cedarmount House west setting with rubble stone wall and stone piers



Fig. 12 – View southeast - Outbuilding



Fig. 1 – View west – Coach House east elevation



Fig. 13 — View southwest - 1837-1865 stone boundary wall between the rear 'The Garth', 'Thendara' and Hollywood House



Fig. 14 – View east towards Knockrabo Gate Lodge (West)



Fig. 15 – View south towards Knockrabo Gate Lodge (West)